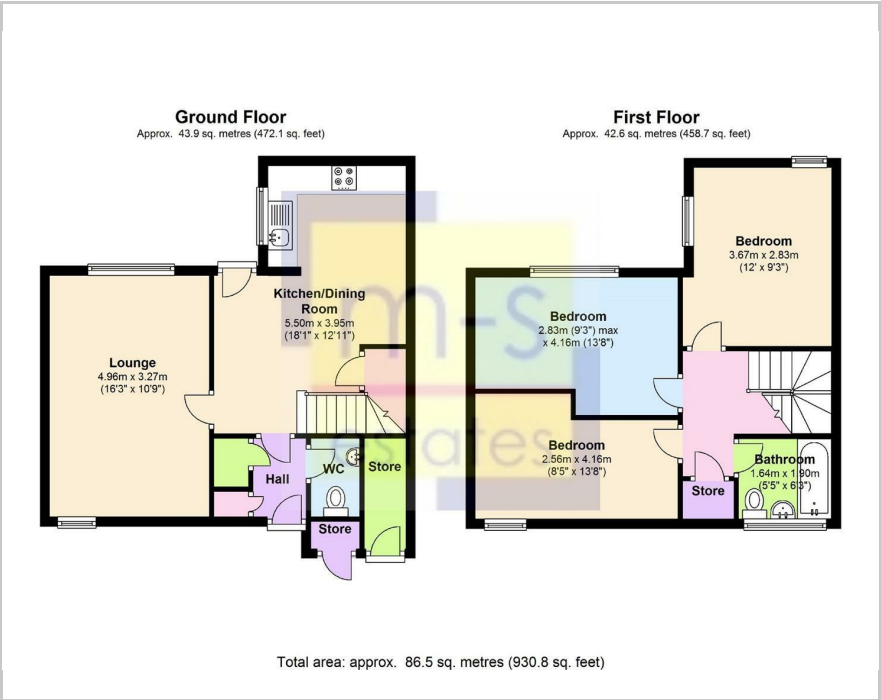




19 Park Road, Nottingham, NG7 1LB
£345 Per Week

Floor Plan



Area Map



- STUDENT ACCOMMODATION
- 3 Large double bedrooms.
- Open-plan kitchen & dining area.
- Spacious Living room
- Bathroom & additional WC
- Spacious Property
- Very Close to local amneities
- Easy access to UON and QMC
- Located off Park Road.
- ARLA Registered Agent.

Energy Efficiency Rating		
	Current	Potential
Very energy efficient - lower running costs		
(92 plus) A		87
(81-91) B		
(69-80) C		
(55-68) D	65	
(39-54) E		
(21-38) F		
(1-20) G		
Not energy efficient - higher running costs		
England & Wales		
EU Directive 2002/91/EC		



These particulars, whilst believed to be accurate are set out as a general outline only for guidance and do not constitute any part of an offer or contract. Intending purchasers should not rely on them as statements of representation of fact, but must satisfy themselves by inspection or otherwise as to their accuracy. No person in this firms employment has the authority to make or give any representation or warranty in respect of the property.